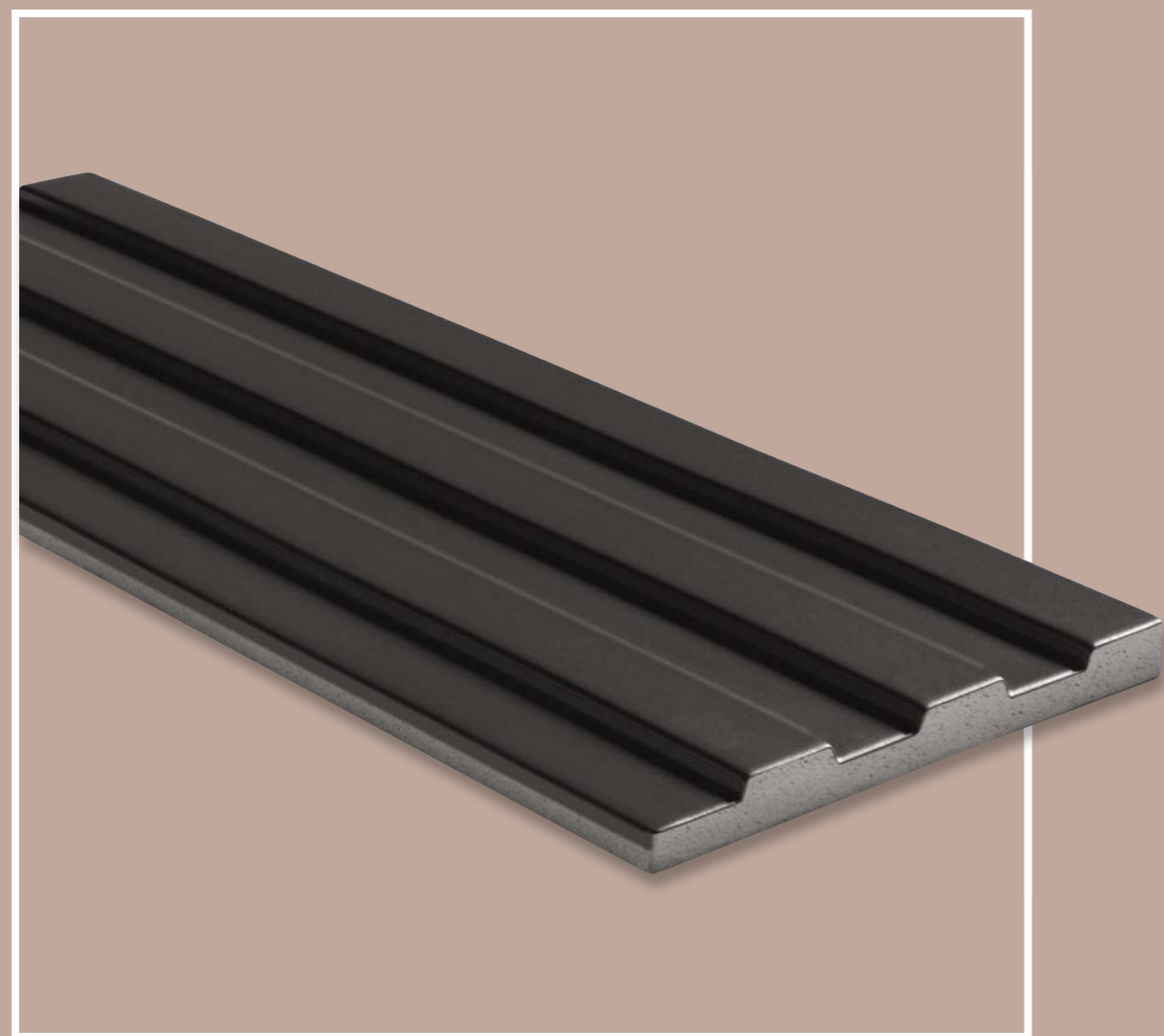


# HIP HOP

10 x 40 · 4" x 16"  
15 x 40 · 6" x 16"



REVESTIMIENTO / WALL TILE  
HIP HOP DARK 15 x 40 · 6" x 16"



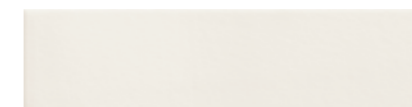
REVESTIMIENTO / WALL TILE  
**HIP HOP BIANCO 10 x 40 · 4" x 16"**  
**HIP HOP BIANCO 15 x 40 · 6" x 16"**



# HIP HOP



EVOLUTION  
 EXTRUDED PORCELAIN TILE



**HIP HOP BIANCO**  
 10 x 40 (G 82) 4" x 16" **m**



**HIP HOP BIANCO**  
 15 x 40 (G 81) 6" x 16" **m**



**HIP HOP CALDAIA**  
 15 x 40 (G 81) 6" x 16" **m**



**HIP HOP ALUMINIUM**  
 15 x 40 (G 81) 6" x 16" **m**



**HIP HOP DARK**  
 15 x 40 (G 81) 6" x 16" **m**



| FORMATO | PULGADAS | PZ/CAJA | M <sup>2</sup> /CAJA | CAJA/PLT | PESO/CAJA | PESO/PLT |
|---------|----------|---------|----------------------|----------|-----------|----------|
| 10 x 40 | 4" x 16" | 14      | 0,56                 | 112      | 12,63     | 1,430    |
| 15 x 40 | 6" x 16" | 10      | 0,60                 | 60       | 17,35     | 1,056    |

\* Para obtener un acabado perfecto NATUCER recomienda utilizar un color de junta similar al de la pieza.  
 \* To find a perfect finish, NATUCER recomend to use a similar grout color than the piece.